

# Reimagining The Modern: CH Architects' Residential Projects





Northwest US  
Coastal House  
Whidbey Island, Washington, US



Prairie Style  
Bungalow Renovation  
Ottawa, ON



Modern Era  
House Renovation  
Toronto, ON



Car Port House  
Modern Bungalow Renovation  
Ottawa, ON

## Northwest US

## Coastal House

Whidbey Island,  
Washington State, USA

Ch-architects look at projects like this one as opportunities to take the ethos of the original modernist design one more logical step, by opening up the box to views and creating a space that really addresses the clients' needs. This project is a renovation of a modern era ranch house located on Whidbey Island, near Seattle Washington. A new wall of glass opens up this house to views of Saratoga Passage. Thanks to this new wall of glass, what was once a closed in living space now opens up to astonishing coastal views. The reclad fireplace anchors the room and the kitchen is now open to views.

Ch-architects proposed a new office space that would take up part of what was an existing oversized garage. The new book lined space features some of the best views in the house.



Photo by Meghan Montgomery of Built Work Photography, Seattle, WA

Photo by Meghan Montgomery of Built Work Photography, Seattle, WA







Photo by Meghan Montgomery of Built Work Photography, Seattle, WA

Ch-architects also proposed combining two small bedrooms and enlarging windows to create this relaxing master suite with ocean views. The owners' art collection and furniture harmonize with the architecture to create a really special space.

Photo by Meghan Montgomery of Built Work Photography, Seattle, WA





At ch-architects we are always working out how to open spaces up, improve natural lighting, and add virtual connection between floors and rooms. The Whidbey Island Project is a great example where what was initially a hidden stair connecting the basement and main floors is now open to the living and dining space. A new glass railing helps continue the sense of openness. The house had a movie theatre in the basement and now there is a flow of space from entertaining upstairs to maybe a movie later on in the basement.

Photo by Meghan Montgomery of Built Work Photography, Seattle, WA

As with many modern era houses, the kitchen was initially a very utilitarian space and separate from the rest of the house. the new design showcases gorgeous bamboo cabinetry and carefully selected appliances, all part of the new living dining space.



Photo by Meghan Montgomery of Built Work Photography, Seattle, WA

Architecture team:  
Christopher Hoyt



Prairie Style  
Bungalow Renovation  
Ottawa, ON

This project features ch-architects' signature contemporary design, including vibrant colours, meticulously crafted millwork, and a hexagonal tile floor that abuts original hardwood, paying homage to the house's historical character while creating an updated feel. A once closed-in circa 1980 kitchen has been opened-up through careful use of a new steel beam below. A beautiful walnut bar with waterfall edge is the centerpiece of the new kitchen. Blue and black cabinetry offset the walnut wood used for the bar top.



The kitchen used to be completely separate from the living and dining room. Ch-architects artfully combined the spaces to create a modern living space. Elegant combinations of furniture that respect the clients budget are one of ch-architects' signatures.

Architecture team:  
Christopher Hoyt  
Brett Shaw  
Elnaz Azizi



Modern Era  
House Renovation  
Toronto, ON

This project proposes a full renovation of a circa 1950 house in Toronto's St. Clair West Village neighborhood. The floor plan of the existing house is a series of small spaces and visual connections were scant. The basement was renovated by ch-architects a few years ago. The as of yet unbuilt scheme proposed here continues the renovation and shows a new front porch structure, and opened up kitchen, dining and living spaces on the main floor.

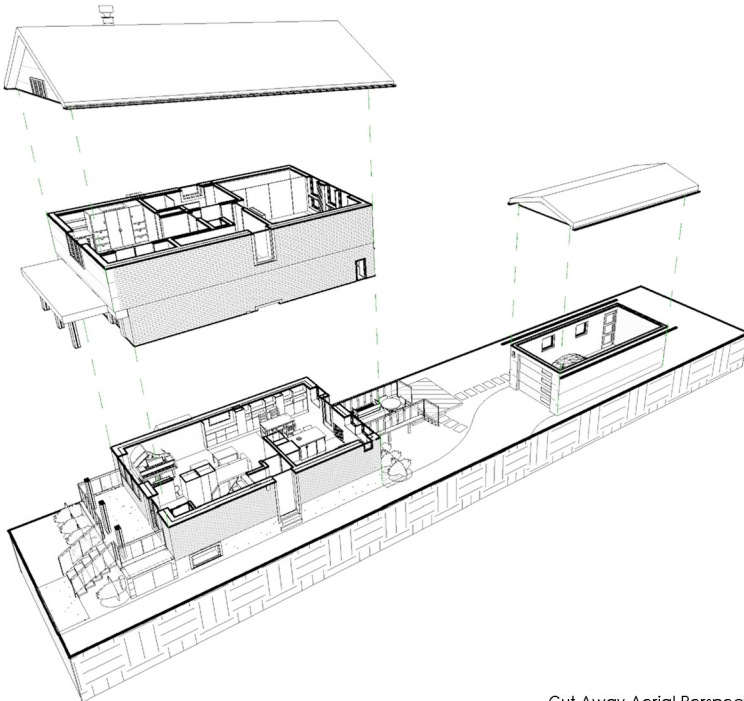
The second floor will feature a significantly expanded bathroom, and renovations to the bedrooms with built in cabinetry to improve closets and storage. Enlarged windows and a patio door will lead out onto a new deck, the rear yard will be landscaped and a new garage will be provided. The new design will make the house much more livable for this young family.



Proposed Dining Area and Kitchen



Existing Dining room



Cut Away Aerial Perspective View



Proposed Kitchen, Dining, and Living Room Spaces

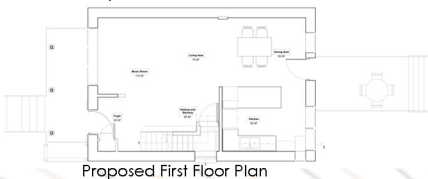
The redesign of this home is focused on improving day to day life for this young family. Rooms will now open up to each other more and there are a lot of new built in cabinets, closets, bookcases, and storage.

A re-imagined kitchen will now be much more part of the living space than previously. More windows and glazing will add light and connect the inside to a very desirable outdoor space. New porches on both the front and back of the house will make being outside much more pleasant in at least three seasons. The second level will feature a completely reimagined bathroom as well as improved closets, storage, and windows.

Architecture team: Christopher Hoyt, Brett Shaw, Elnaz Azizi



Proposed Basement Plan



Proposed First Floor Plan



Proposed Second Floor Plan



View of Proposed Skylight Shower

Car Port House  
Modern Bungalow Renovation  
Ottawa, ON



photo by Simone Dicoستا



This contemporary design spotlights simplicity, vibrant colours, and meticulously hidden appearances within customized cabinetry. A blue painted wall ties kitchen and living room together. Tall ceilings and a minimal material palette help increase the feeling of spaciousness. White cabinets complete the composition and create a nice spot for the espresso machine. The bar is a hub for homework and quick breakfasts for the kids before school. The bathroom showcases a judicious and budget conscious update of an existing bathroom. Ch-architects kept the existing vanity and added new lightings fixtures, quartz countertops, a second sink to create more room for a growing family.

Architecture team:  
Christopher Hoyt  
Brett Shaw  
Erika Sieweke

photo by Simone Dicoستا



